



## Wall heating

### System E-ENERGY CARBON FLEECE

#### Prototype of a Tiny House in 95694 Mehmeisel, Germany

The **E-ENERGY CARBON** system was installed in a Tiny House prototype. The bathroom is heated with the **FLEECE** heating foil via the wall. The living area was equipped with **E-ENERGY CARBON PET** and vinyl flooring. The two heating zones are controlled via a WiFi room thermostat.

Surface heating	E-ENERGY CARBON FLEECE
Surface	25 m <sup>2</sup>
Area	Ground floor

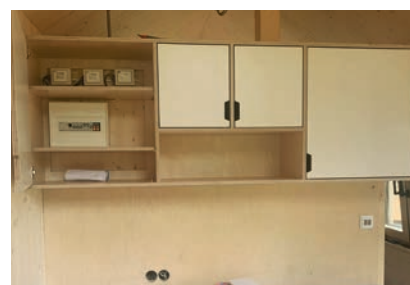
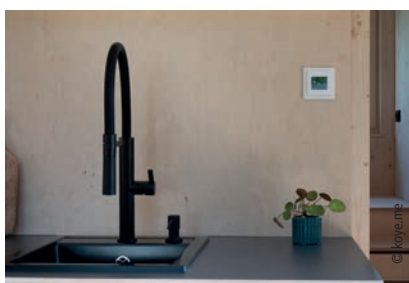
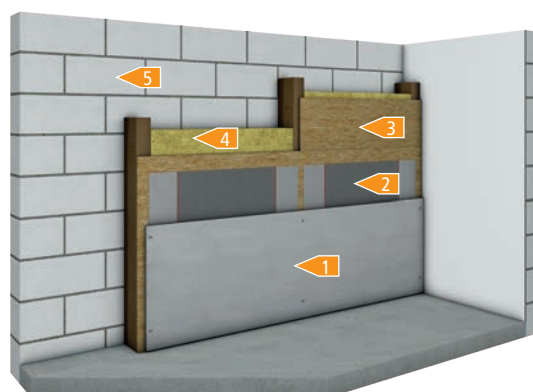


#### Construction

- 1 Seamless wall covering
- 2 E-ENERGY CARBON FLEECE
- 3 Wooden wall
- 4 Insulation
- 5 Stone or wooden wall

0,4 mm

0,4 mm





## Floor heating

### System E-ENERGY CARBON PET

#### Prototype of a Tiny House in 95694 Mehmeisel, Germany

The **E-ENERGY CARBON** system was installed in a Tiny House prototype. The bathroom is heated with the **FLEECE** heating foil via the wall. The living area was equipped with **E-ENERGY CARBON PET** and vinyl flooring. The two heating zones are controlled via a WiFi room thermostat.

Floor covering	Vinyl flooring
Surface heating	E-ENERGY CARBON PET
Surface	25 m <sup>2</sup>
Area	Ground floor

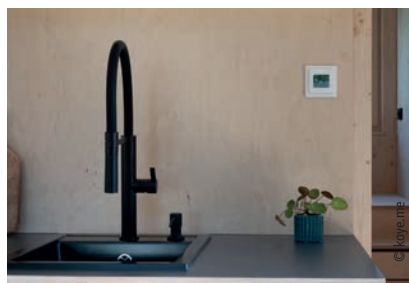
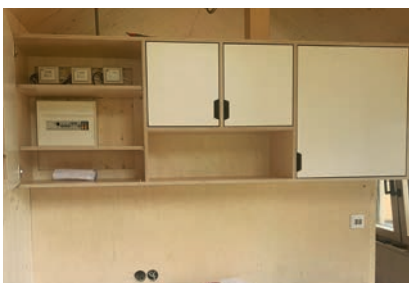
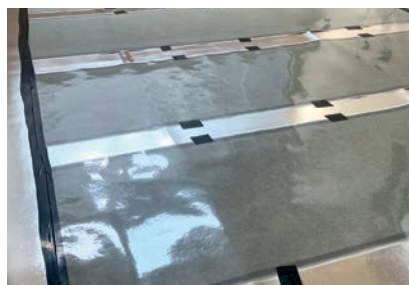
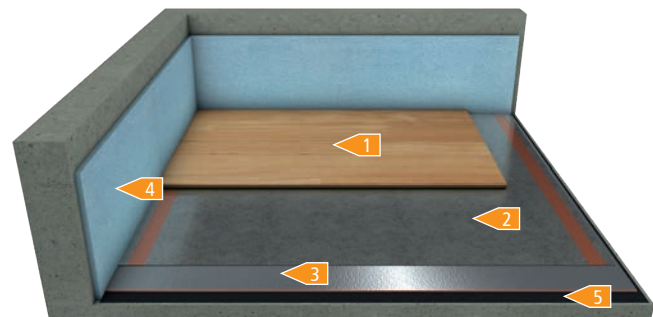


#### Construction

- 1 Vinyl flooring (floating installation)
- 2 E-ENERGY CARBON PET
- 3 Impact sound insulation / underlay e.g. CF DIRECT 1.5
- 4 Edge insulation strips EPS | NEO
- 5 Moisture barrier if necessary

0,4 mm  
1,5 mm

2 mm







## Decentralised domestic ventilation

## AIRUNIT GEMINI

Prototype of a Tiny House in  
95694 Mehmeisel

The **AIRUNIT GEMINI** decentralised domestic ventilation system was installed in a Tiny House prototype. The 25 m<sup>2</sup> living area is completely ventilated with one unit.

Number of units	1 piece
Living area	25 m <sup>2</sup>
Area	Ground floor



## Details

- 1 Filter ISO Coarse 50% (G3)
- 2 Heat exchanger
- 3 Ventilator support
- 4 Ventilator
- 5 Outer cover
- 6 Sealing
- 7 Room side air diffuser

